



## *Bespoke garage doors*

[www.selectgaragedoors.com](http://www.selectgaragedoors.com)

2012

**GRP**

**SIDE HINGED**

**GLOSS WHITE**



**ESKDALE**

SIZES	WIDTH	HEIGHT
	7'0 to 8'0 (2134 to 2438)	6'6 to 7'0 (1981 to 2134)



**DUNSCAR**

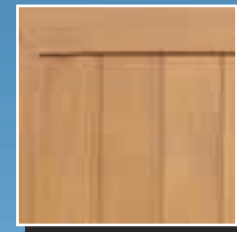
SIZES	WIDTH	HEIGHT
	7'0 to 7'6 (2134 to 2286)	6'6 to 7'0 (1981 to 2134)

## WOOD GRAIN



### WITHNELL

SIZES	WIDTH	HEIGHT
	7'0 to 8'0 (2134 to 2438)	6'6 to 7'0 (1981 to 2134)



### RIBCHESTER

SIZES	WIDTH	HEIGHT
	7'0 to 8'0 (2134 to 2438)	6'6 to 7'0 (1981 to 2134)

## GLOSS WHITE DOORS



### ESKDALE

SIZES	WIDTH	HEIGHT
Single	6'10 to 8'0 (2083 to 2438)	6'3 to 7'0 (1905 to 2134)



### HARWOOD

SIZES	WIDTH	HEIGHT
Single	6'10 to 8'0 (2083 to 2438)	6'3 to 7'0 (1905 to 2134)



**ASTLEY**

SIZES	WIDTH	HEIGHT
Single	6'6 to 9'0 <i>(1981 to 2743)</i>	6'6 to 8'0 <i>(1981 to 2438)</i>
Intermediate	9'0 to 12'0 <i>(2743 to 3657)</i>	6'6 to 8'0 <i>(1981 to 2438)</i>
Double	12'0 to 15'0 <i>(3657 to 4572)</i>	6'6 to 8'0 <i>(1981 to 2438)</i>



**BEAUMONT**

SIZES	WIDTH	HEIGHT
Single	6'6 to 8'0 <i>(1981 to 2438)</i>	6'6 to 8'0 <i>(1981 to 2438)</i>
Double	13'0 to 15'0 <i>(3962 to 4572)</i>	6'6 to 8'0 <i>(1981 to 2438)</i>

## WOODGRAIN DOORS



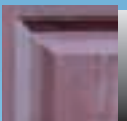
### AINSWORTH

SIZES	WIDTH	HEIGHT
Single	6'6 to 8'0 (1981 to 2438)	6'3 to 8'0 (1905 to 2438)
Double	13'0 to 15'0 (3962 to 4572)	6'6 to 7'6 (1981 to 2286)

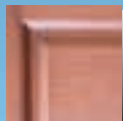


### WITHNELL

SIZES	WIDTH	HEIGHT
Single	6'6 to 8'0 (1981 to 2438)	6'3 to 8'0 (1905 to 2438)
Double	13'0 to 15'0 (3962 to 4572)	6'6 to 7'6 (1981 to 2286)



MAHOGANY



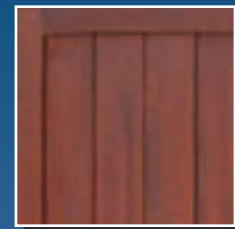
CHESTNUT



LIGHT OAK

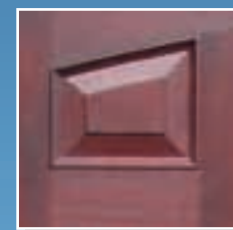
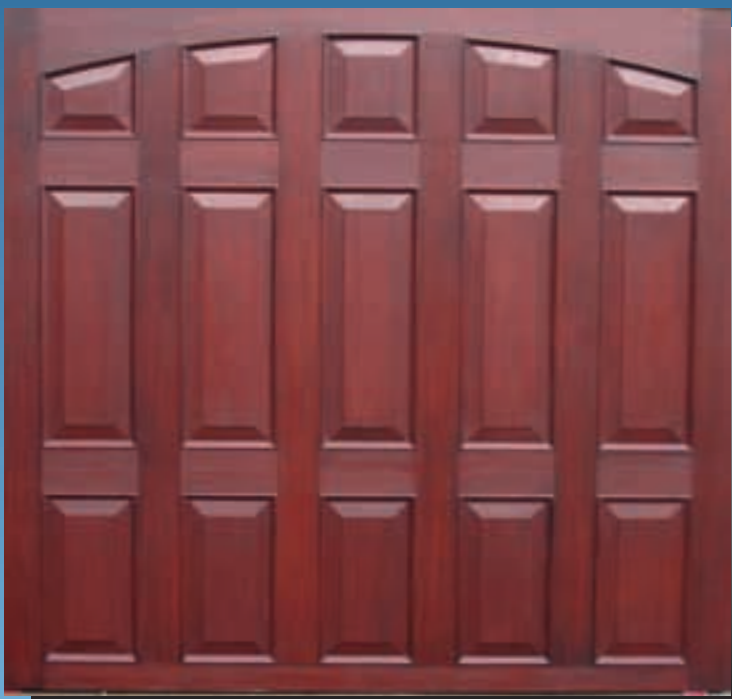


GOLDEN OAK



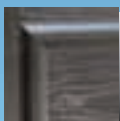
**RIBCHESTER**

SIZES	WIDTH	HEIGHT
Single	6'6 to 8'0 <i>(1981 to 2438)</i>	6'6 to 8'0 <i>(1981 to 2438)</i>
Double	13'0 to 15'0 <i>(3962 to 4572)</i>	6'6 to 8'0 <i>(1981 to 2438)</i>



**EDGWORTH**

SIZES	WIDTH	HEIGHT
Single	6'6 to 8'0 <i>(1981 to 2438)</i>	6'6 to 6'11 <i>(1981 to 2109)</i>
Double	14'0 <i>(4267)</i>	6'6 to 6'11 <i>(1981 to 2109)</i>



**BLACK**



**WHITE**



**GREEN**

**CANOPY GEAR** UPTO 8' ONLY (2438mm)

Canopy gear operates with overhead torsion spring and vertical tracks fixed directly to the frame. Therefore there are no tracks suspended from the ceiling and full drive through clearance is gained between the frame. Multipoint locking with security Euro - profile cylinder and user friendly handle, centred in the top third of the door.

**RETRACTABLE GEAR**

Retractable gear gives a smooth operation offering superb balance and is ideal for electric automation. Multipoint locking with security Euro - profile cylinder and user friendly handle, centred in the bottom third of the door.

**SIDE HINGED**

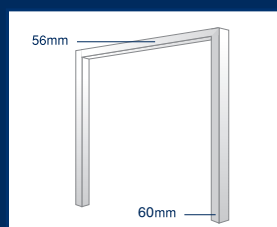
The lead door will be to the right hand side or left if specified. Locking will be roller bolt night latch or alternatively euro lock with bars as optional extra. Doors will open out as standard, inwards on request.

**FACTORY FRAMED**

All doors up to 9' (2743) wide are available with pre-fitted steel frame. The majority of operating gear is factory fitted for quick installation. Steel frames are powder coat finished in white, brown or black.

Frame dimension-Sides-

60mm (2<sup>3</sup>/<sub>8</sub>') wide Head - 56mm (2<sup>1</sup>/<sub>4</sub>') deep.

**GRP WARRANTY**

Select Garage Doors Ltd provides a 2-year warranty against manufacturing defects from date of purchase. Valid claims will be repaired or replaced at our discretion.

Subject to the following conditions:

**Operating gear**

All products must be installed in accordance with installation instructions.

Moving parts should be lubricated regularly to ensure smooth operation. This should occur at least bi-annually along with a visual inspection of any parts subject to wear. If wear is detected you must contact your supplier immediately. A qualified engineer must inspect and carry out repairs/replacements as necessary. **DO NOT ATTEMPT THIS YOURSELF, AS THIS COULD BE POTENTIALLY DANGEROUS.**

**Finish**

All doors are hand finished, therefore it is inevitable that some minor distortion of panels will occur and they may be subject to minor blemishes or slight inconsistencies. A visual inspection should be carried out in natural daylight (not direct sunlight).

Any marks, distortions, minor indentations, scuffs or blemishes, which are not visible at a distance of 3m from the door, are acceptable.

The door and frame must be kept free from impact damage, scratches and other surface abrasions. Damage, corrosion

or discolouration caused by contact with abnormal elements within the building or from pollution, chemicals, or caustic substances is excluded from warranty. Surfaces must be freely exposed to washing by rainfall and kept clear of bird droppings, accumulated dirt and debris.

Doors should be periodically washed down with warm water and a soft cloth only, particular care must be taken with wood grain doors, and abrasive substances must not be used.

**Translucency**

Viewed from inside it may be possible to see variations in translucency, this does not detract from door quality.

**Size variations**

Doors shown in this brochure are size 7'0 x 6'6. Door panel configuration will obviously differ depending on door size.

**Print limitations**

Colours and detail shown are limited to printing process. See your local distributor for more detailed information.

Colour samples are a guide only and may not match the door supplied exactly.

The company reserves the right to make alterations in design and manufacture as are deemed necessary without notification.